

TESLA RESERVE CONCEPT PLAN

**v !
“HISMET WAREP” ~ “SACRED EARTH” ~ RESERVE**

***Chochenyo language of the East Bay Ohlone people:
v ! v
“Hismet Warep Horsetka”, meaning “Sacred Earth in Harmony”***

Prepared by

Friends of Tesla Park Coalition

January 24, 2025

TABLE OF CONTENTS

- PART I – TESLA RESERVE CONCEPT PLAN 4
 - A. OVERVIEW 4
- PART II – WHY TESLA SHOULD BE CLASSIFIED AS A RESERVE 6
 - A. TESLA EXCEEDS STATUTORY REQUIREMENTS FOR RESERVE STATUS..... 6
 - 1. Tesla holds “outstanding natural [or] and scenic characteristics [or] and areas containing outstanding cultural resources of statewide significance.” 7
 - 2. Tesla is an intact ecosystem and integrated landscape containing vital “native ecological associations, unique faunal or floral characteristics, geological features, and scenic qualities.” 7
 - 3. Tesla contains “historic or prehistoric structures, villages, or settlements, archaeological features, ruins, artifacts, inscriptions made by humans, burial grounds, landscapes, hunting or gathering sites, and similar evidence of past human lives or cultures.” 8
 - B. TESLA’S STATEWIDE BIOLOGICAL SIGNIFICANCE IS SUPPORTED BY 9
 - INDEPENDENT RESEARCH AND ASSESSMENTS 9
 - C. TESLA AS A RESERVE DIRECTLY ADVANCES STATE POLICY PRIORITIES 10
 - D. TESLA AS A RESERVE ADDRESSES ADMINISTRATIVE FACTORS 11
 - E. A TESLA RESERVE FILLS AN UNMET NEED - THERE ARE NO OTHER STATE PARKS RESERVES IN REGION, BUT THERE ARE MULTIPLE OTHER HIGH-INTENSITY RECREATION PARKS 12
 - F. LEGISLATURE SUPPORTED PRESERVATION OF TESLA AND ESTABLISHED RESERVE CLASSIFICATION TO PERMANENTLY PRESERVE LANDS OF STATEWIDE SIGNIFICANCE SUCH AS TESLA..... 13
 - G. DO NO HARM..... 13
- PART III – CONCEPTUAL DESIGN FOR “HISMET WAREP” ~ “SACRED EARTH” RESERVE 15
 - A. TESLA RESERVE AREA 16
 - 1. Establish the 3,100 acre Tesla Natural Reserve pursuant to PRC Section 5019.65 (a)..... 16
 - 2. Give the Reserve a California Native American Name 16
 - 3. Co-Manage the Reserve with Indigenous Tribes..... 16
 - 4. Provide Low-Intensity Recreation for Public Access within the Reserve 17
 - 5. Locate Reserve Entrance at Diablo Range District Office Entrance 19
 - 6. Manage Reserve for Maximum Resource Protection 19
 - B. OTHER STATE PARKS PROPERTY 20
 - 1. Use Already-Impacted Other State Parks Property on Tesla Road for Higher-Intensity Uses 20
 - C. CARNEGIE SVRA..... 21
 - 1. Use Already Impacted Carnegie SVRA for High-Intensity Uses..... 21

- D. TESLA HISTORIC DISTRICT OVERLAY 22
 - 1. Establish the Tesla Historic District and seek designation under the National Registry of Historic Places (NRHP) as recommended by the Office of Historic Preservation in 2012..... 22
- E. REGIONAL PLANNING..... 22
 - 1. Facilitate long-term regional planning..... 22
- F. MAPS AND TABLE 23
 - 1. Tesla (Hismet Warep) Reserve Concept Map 23
 - 2. Table of Key Elements of Tesla Reserve Concept Map and Planning Area 25
 - 3. Special Status Species and Habitat Occurrences on Future Tesla Reserve Map..... 28

TESLA RESERVE CONCEPT PLAN

v ! “HISMET WAREP” ~ “SACRED EARTH” ~ RESERVE

PART I – TESLA RESERVE CONCEPT PLAN

A. OVERVIEW

The Tesla Reserve Concept Plan provides that the entire 3,100 acre Tesla wildlands should be Classified as a Reserve pursuant to Public Resources Code (PRC) §5019.65, to protect Tesla’s extraordinary natural resources and entire Tribal Cultural Landscape while providing appropriate low-intensity public access for enjoyment and education.

Classify the entire 3,100 acre Tesla wildlands as a Reserve pursuant to PRC §5019.65 named “Hismet Warep Reserve”¹ to permanently protect the irreplaceable natural resources and Tribal Cultural Landscape while providing appropriate low-intensity public access for enjoyment and education.

Tesla is the perfect example of a biologically diverse, culturally significant intact native landscape of statewide significance that should be established as a State Park Reserve. It provides a unique opportunity to protect an intact native landscape holding irreplaceable biodiversity and ecological functions, and to make the relationship of Indigenous people with the land a primary aspect of design and management.

Of the statutory options available, Reserve is the classification that best protects Tesla’s extraordinary natural resources of statewide significance, including preserving its biodiversity, rare species, sensitive habitats, intact ecosystem, and regional biological benefits, as documented in the extensive report *Reserve Classification of Tesla based on Assessment of Biological Resources and Effects of Recreational Activities*². Reserve classification provides the highest level of natural resource protection, and the least environmental impacts, including the lowest greenhouse gas emissions and related climate impacts.

¹ Chochenyo language characters generally not included for *Hismet Warep* and *Hismet Warep Horsetka* in remainder of document

² See *Reserve Classification of Tesla based on Assessment of Biological Resources and Effects of Recreational Activities* for documentation that Tesla’s biological resources are exceptional and of statewide significance.

Reserve classification also protects the essential Tribal Cultural Landscape (TCL) that covers the entire 3,100 acre Tesla site, and other cultural resources. Indigenous leaders have identified the Tribal Cultural Landscape as the fundamental unifying form of discrete Indigenous archeological features and sacred sites that must be protected as a cultural resource itself. Tesla includes important historic features, including the historic Tesla town and coal mine site. Reserve Classification permanently protects the Tribal Cultural Landscape and features, historic resources, and Tesla’s exceptional natural resources.

In addition to specific access and joint decision-making for Indigenous Tribes under co-management agreements, access for low-intensity recreational activities for the general public (e.g., hiking, bird-watching, nature photography, natural and cultural resource appreciation, interpretative trails and tours), K-12 education, underserved youth programs, and university level research can also be provided within a Reserve.

Chochenyo language of the East Bay Ohlone people:

v ! v

“Hismet Warep Horsetka”, meaning “Sacred Earth in Harmony”

As identified by Tribal leaders, the Tesla Reserve should be given the Ohlone Chochenyo language name *“Hismet Warep”* (language characters not included), meaning **“Sacred Earth”**. The name provides the guiding principles for the development, use, and management of the Reserve which will ensure permanent respectful preservation.

While the Natural Reserve Classification is applicable to Tesla because of its irreplaceable natural, cultural, geologic and scenic elements of statewide significance, the exceptional aspect of Tesla is that the Cultural Reserve Classification can also apply to protect the entire Tribal Cultural Landscape, its discrete archaeological and sacred features, plus the historic Tesla town and mine site features. Tesla’s combined resources of statewide significance compel Reserve classification.

PART II – WHY TESLA SHOULD BE CLASSIFIED AS A RESERVE

A. TESLA EXCEEDS STATUTORY REQUIREMENTS FOR RESERVE STATUS

Section 5019.65 of the Public Resources Code defines a Reserve as follows³:

State reserves consist of areas embracing **outstanding natural or scenic characteristics or areas containing outstanding cultural resources of statewide significance**. State reserve units may be established in the terrestrial or nonmarine aquatic (lake or stream) environments of the state and shall be further classified as one of the following two types:

(a) State **natural** reserves, consisting of areas selected and managed for the purpose of preserving their **native ecological associations, unique faunal or floral characteristics, geological features, and scenic qualities in a condition of undisturbed integrity**. Resource manipulation shall be restricted to the minimum required to negate the deleterious influence of man.

Improvements undertaken shall be for the purpose of making the areas available, on a day use basis, for public enjoyment and education in a manner consistent with the preservation of their natural features.

Living and nonliving resources contained within state natural reserves shall not be disturbed or removed for other than scientific or management purposes.

(b) State **cultural** reserves, consisting of areas selected and managed for the purpose of preserving and protecting **the integrity of places that contain historic or prehistoric structures, villages, or settlements, archaeological features, ruins, artifacts, inscriptions made by humans, burial grounds, landscapes, hunting or gathering sites, or similar evidence of past human lives or cultures**. These areas may also be places of spiritual significance to California Native Americans. Within state cultural reserves, the highest level of resource protection shall be sought.

Improvements may be undertaken for the purpose of providing public access, enjoyment, and education, and for cultural resource protection. Improvements made for the purpose of cultural resource protection shall take into account the possible need for access to the site for ceremonial or spiritual purposes.

Living and nonliving resources contained within state cultural reserves may be used for ceremonial or spiritual purposes, consistent with other laws, and if the use is not harmful to threatened or endangered species or to the cultural resources intended for protection by this designation. Management actions shall be consistent with the preservation of cultural resources and with federal and state laws.

³ https://leginfo.legislature.ca.gov/faces/codes_displayText.xhtml?lawCode=PRC&division=5.&title=&part=&chapter=1.&article=1.7

Based on the natural resources documented in the *Reserve Classification of Tesla based on Assessment of Biological Resources and Effects of Recreational Activities*, as well as the Tribal Cultural Landscape, including specific archeological features and sacred sites identified by Indigenous Tribes, Tesla exceeds the required elements for classification as a Natural Reserve or a Cultural Reserve.

1. Tesla holds “outstanding natural [or] and scenic characteristics [or] and areas containing outstanding cultural resources of statewide significance.”⁴

- a. Tesla is located along the northern portion of the 200-mile Diablo Range in the interior region of the Coast Range and is part of California’s last and least protected remaining native landscape, providing scenic vistas of its dramatic setting.
- b. Tesla wildlands span a narrow “neck” of the vital critical linkage wildlife and habitat corridor connecting Mount Diablo at the north of the Diablo Range south through Tesla to the southern Diablo Range.
- c. Tesla is unique in its layers of overlapping natural and cultural resources. The landscape supports exceptional biodiversity, regional natural resource connections, and irreplaceable cultural resources that span the range of human existence in the region as long-recognized by scientists and scholars.
- d. Tesla is identified as a top conservation priority by government planning and independent research, including CDFW ACE statewide biodiversity assessment, UC Berkeley phylogenetic research, EBRCIS/EACCS planning assessments, and ALOS program conservation prioritization assessment.⁵
- e. Tesla would be the only State Reserves in the State Parks Diablo Range District dedicated to preserving this essential part of California’s natural and cultural landscape which makes it a statewide priority given its irrefutably exceptional natural and cultural resources and values.

2. Tesla is an intact ecosystem and integrated landscape containing vital “native ecological associations, unique faunal or floral characteristics, geological features, and scenic qualities.”⁶

- a. Tesla is a particularly unique Biodiversity Hot Spot of statewide significance within the bio-diverse hotspots of the broader Diablo Range and California.
- b. Tesla holds within its 3,100 acres an abundance of sensitive, rare natural resources, and assem-

^{4, 6} See *Reserve Classification of Tesla based on Assessment of Biological Resources and Effects of Recreational Activities* for documentation that Tesla’s biological resources are exceptional and of statewide significance. Figure 2 from Assessment is included with maps at the end of this document.

⁵ CDFW – California Department of Fish and Wildlife Areas of Conservation Emphasis; EBRCIS/EACCS – East Bay Regional Conservation Investment Strategy/East Alameda County Conservation Strategy; Altamont Landfill Open Space program.

blages, including numerous State and federally listed threatened, endangered and candidate species, special-status species, and sensitive habitats. Such an intact grouping of at-risk biological resources is rare.

- c. Tesla is at the intersection of biotic zones, including the drier hotter southern desert influence from the Central Valley and the wetter cooler maritime influence of the San Francisco Bay Area.
- d. Tesla includes varied habitats, vegetation communities and geographic features that add to its biodiverse integrated landscape, including:
 - i. Corral Hollow Creek, Mitchell Ravine water courses and other riparian corridors with sycamores, cottonwoods, valley oaks and willows.
 - ii. Grasslands, Chaparral, Oak, Pine and mixed woodlands.
 - iii. Elevation changes from about 750 feet along the Corral Hollow Creek to 2,280 feet along the highest ridge tops with varied and expansive scenic qualities and vistas.
 - iv. Two watersheds, one draining east into the San Joaquin Delta, and one draining west into Alameda Creek and San Francisco Bay.
- e. Tesla has numerous rare special-status species, including:
 - i. Fifty-three (53) special-status animals, including 10 that are listed as endangered, threatened or candidate species, and 3 that have habitat in Tesla and have been identified nearby.
 - ii. Thirty-two (32) wildlife species identified as ‘Species of Greatest Conservation Need’ by the California State Wildlife Action Plan.
 - iii. At least 45 special rare plant species, plus at least 74 locally rare plants.
 - iv. Nine (9) sensitive vegetation communities
- f. Tesla holds the ‘Tesla Formation’ geologic feature which was the site of the first commercial coal mining operation in California (home to the historic Tesla Mine and Town site). Tesla is also the location where ancient plant fossils have been found of Eocene age. Fossils from Tesla from the Eocene era are housed in the UC Berkeley Museum of Paleontology.
- g. Tesla is also an exceptionally scenic location with high ridgetop plateaus and panoramic vistas of Mount Diablo, the Central Valley, Livermore Valley, and Diablo and Sierra Nevada Mountain Range, steep canyons descending into rugged riparian streams of the Corral Hollow Canyon and Mitchell Ravine, and varied habitats with the associated diversity of vegetation and wildlife.

3. Tesla contains “historic or prehistoric structures, villages, or settlements, archaeological features, ruins, artifacts, inscriptions made by humans, burial grounds, landscapes, hunting or gathering sites, and similar evidence of past human lives or cultures.”

Tesla’s irreplaceable natural features are matched by its equally important cultural resources, and Tribal Cultural Landscape, including:

- a. Part of ancestral lands for the Northern Valley Yokuts from the Central Valley, Costanoan tribes from the East Bay, and other tribes from the region. It was a place used for hunting and gathering of wildlife, plants, and materials for items such as food, clothing, shelter, tools, ornaments and medicines. It was used for spiritual ceremonies, social gatherings, and trading amongst and between tribes. Tribal members lived and thrived on Tesla throughout the seasons and over the millennia. There is significant evidence of use for burial grounds, and sites for tool making, food preparation, including large bedrock mortars, and ceremonial sites possibly 4,000 years old. This year-round use was supported by the abundant supplies of food, plants, animals, and medicinal material within Tesla that are still present today. These elements make the entire 3,100 acres of Tesla the Tribal Cultural Landscape (TCL) for the Indigenous People who used and lived on the land.
- b. Location along the El Camino Viejo – “Old Road” - from southern California established in California’s Spanish period along the west side of the San Joaquin Valley through the Corral Hollow Canyon and into the East Bay Area.
- c. Location of the Historic Tesla Town and Mine Site operating from late 1800s to the early 1900s.
- d. Location of the California State Parks Office of Historic Preservation recommended *Tesla Mining and Industry Historic District* that the Office identified in 2012 as eligible for designation in the National Register of Historic Places, but which has never been pursued by State Parks.

B. TESLA’S STATEWIDE BIOLOGICAL SIGNIFICANCE IS SUPPORTED BY INDEPENDENT RESEARCH AND ASSESSMENTS⁷

The documented biological significance of Tesla as an exceptional biodiverse integrated ecosystem is reinforced and affirmed by a long history of scientific inquiry, and by multiple government planning assessments and independent research. The Tesla area is a[n]:

1. **Top biodiversity area in state** based on California Department of Fish and Wildlife Areas of Conservation Emphasis (ACE) statewide biodiversity assessment
2. **Top biodiversity area for conservation in state** based on independent UC Berkeley phylogenetic research.
3. **Vital conservation area in state with 32 *Species of Greatest Conservation Need*** as identified by the *California State Wildlife Action Plan*.

⁷ See *Reserve Classification of Tesla based on Assessment of Biological Resources and Effects of Recreational Activities* for documentation that Tesla’s biological resources are exceptional and of statewide significance. Figure 2 from Assessment is included with maps at the end of this document.

4. **Important Bird Area** designated by California Audubon.
5. **Federally Designated Critical Habitat** for the federally threatened California red-legged frog and Alameda whip snake.
6. **Critical Linkage Habitat Corridor** along the northern Diablo Range identified in *Critical Linkages: Bay Area & Beyond: Science & Collaboration for Connected Wildlands*.
7. **Botanical Priority Protection Area** identified by the East Bay Chapter of the California Native Plant Society.
8. **Priority conservation planning area for landscape planning assessments**, including the East Bay Regional Conservation Investment Strategy/East Alameda County Conservation Strategy (EBRCIS/EACCS) which were prepared under guidance from the California Department of Fish and Wildlife.
9. **Priority conservation planning area in Alameda County** as determined by the Altamont Landfill Open Space (ALOS) program with membership including the County of Alameda, the Cities of Livermore and Pleasanton, and the Sierra Club.

C. TESLA AS A RESERVE DIRECTLY ADVANCES STATE POLICY PRIORITIES

In addition to the objective data about Tesla’s natural and cultural resources that exceed the statutory elements for a Reserve, Tesla classified as a 3,100 acre Reserve provides low-intensity public access for enjoyment and education of our natural and cultural heritage while protecting its rare and irreplaceable natural and cultural resources, sensitive habitats and intact integrated ecosystem. As a new unit of the State Park system that is relatively lightly touched, protection of Tesla is not constrained by legacy uses and, therefore, provides a unique and exciting opportunity to achieve multiple state policy objectives.

Tesla as a Reserve:

1. Native American Equity and Restorative Justice - Makes Native American determination and equity the foundational principle.
 - a. A Reserve organized around the relationship and experience of Indigenous people with the land, advancing California Natural Resources Agency and California State Parks priority objectives.
 - b. Allows for ethnographic study and other research in partnership with Tribes and universities of the cultural heritage of Indigenous People and their relationship with the land.
2. Historic Preservation - Allows for preservation and study of the historical record of the Tesla.
3. State Conservation Objectives - Provides permanent durable preservation of Tesla’s unique biological resource landscape consistent with priority state policy initiatives:

- a. 30x30.
 - b. Biodiversity Protection.
 - c. Climate Change Resiliency.
 - d. Landscape Level Resource Planning.
 - e. Specific resource protection, such as Riparian areas and Threatened and Endangered and other special status species.
4. Access for All - Provides ‘**access for all**’ to a unique natural wildland and cultural landscape in the District. Reserve classification allows access to educational and interpretive programs regarding our natural and cultural heritage, outdoor ethics and environmental stewardship for the general public, Native American tribal members and groups, urban residents and underserved youth.
 5. Advances Scientific Research - Advances scientific research, including the effects of climate change on biodiversity and natural landscapes in an area with a long history of scientific study, a deep supply of collected data, and recognition for its regional and statewide ecological significance.

D. TESLA AS A RESERVE ADDRESSES ADMINISTRATIVE FACTORS

Tesla classified as a Reserve also addresses other important administrative factors. Tesla as a Reserve:

1. Most Safe - Provides the most appropriate classification based on public safety. The 3,100 acres is remote with limited access. Tesla is often cut off by flooding and damage along Corral Hollow Creek with Tesla and Corral Hollow Roads closed or with restricted access. The limited ranch roads into the Tesla wildlands are inaccessible in wet conditions. There are almost annual fires on State Parks property in the area, and the remote location with limited access in the Tesla wildlands, makes visitor vehicle access and camping unsafe. While still affected by flooding impacts in particular, facilities should only be located along Tesla Road to provide for most secure access and public safety.
2. Least Cost - Provides least costly classification option given minimal facilities development and resource manipulation (PRC Section 5019.65 identifies resource manipulation must be restricted to the minimum required to negate the deleterious influence of man, and improvements are limited to making the areas available, on a day-use basis, for public enjoyment and education in a manner consistent with the preservation of their natural features). State Parks has a chronic budget deficient for development, maintenance, operations and capital improvements that would result in inadequate funding for development of high-intensity uses, enforcement, and maintenance, all which lead to the degradation of natural and cultural resources. After-the-fact remediation and adaptive management does not prevent damage, and is insufficient to properly protect and restore resources, that should not be damaged in the first place. Armstrong Redwoods State Natural Reserve is a prime example of initial mis-designation, consequent damage to natural resources, and eventual redesignation to a Reserve.

3. Shortest Timeline - Provides the quickest path to approval and opening the Reserve for low-intensity public access. Although the Tesla Reserve Concept Plan necessarily considers other adjacent planning areas, it is not necessary to delay the classification decision or opening of the 3,100-acre Tesla Reserve because it is discrete unit and requires relatively minimal development for low-intensity access. Opening the Tesla Reserve should not be delayed for the additional time required to develop higher-intensity uses in other planning areas such as the 300-acre Other State Park Property. Expedient action is particularly indicated because it has been over 25 years since the property was purchased by State Parks and almost four years since enabling legislation was enacted. Unnecessary delay affects access for Indigenous tribes and the general public.
4. Opportunities for Regional Planning - Offers opportunities for regional planning beyond the 3,100 acre Tesla Reserve area for conservation and recreation purposes, including effective use of State Parks Carnegie SVRA and the approximate 300 acres of Other State Park Property along Tesla Road, in addition to connections to other local, regional and State public spaces.

E. A TESLA RESERVE FILLS AN UNMET NEED - THERE ARE NO OTHER STATE PARKS RESERVES IN REGION, BUT THERE ARE MULTIPLE OTHER HIGH-INTENSITY RECREATION PARKS

Multiple factors support Tesla classified as a Reserve. There are no Reserves within the Diablo Range District of the State Parks system, including no unit with a primary focus that is organized around the experience of Indigenous people with the land. A Tesla Reserve named “*Hismet Warep*” recognizes this particular Tribal Cultural Landscape and the importance of the Northern Diablo Range within the State’s natural and cultural heritage.

There are at least 29 other State, regional and local parks that have high-intensity uses and active recreation opportunities in the Diablo Range District, including a State Recreation Area (Lake Del Valle) and three State Parks (Henry Coe, Mount Diablo, and Marsh Creek in development). California State Parks itself has approximately 1,850 acres of state park land adjacent to the Tesla Reserve that can provide a range of high-intensity recreation opportunities for the public. This includes over 300 acres of other State Parks Property along Tesla Road (“Other State Parks Property”) that are already impacted, and the approximate 1,550-acre Carnegie State Vehicular Recreation Area (SVRA) that is highly-impacted. Carnegie SVRA already provides high-intensity recreation, including for e-bikes, and has a campground. The Other State Parks Property can also provide biking and an additional campground, if needed, with other higher-intensity recreation activities. All of Tesla’s natural and cultural resources can be fully protected because there are other public lands in the region, including adjacent state parks property, where high-intensity uses are and can be located.

Classifying Tesla as a Reserve adds a missing element of low-intensity recreation to the types of public access in the Corral Hollow Canyon and Diablo Range District while also durably protecting irreplaceable natural and cultural resources of statewide significance. Because of its location between the East Bay and Central Valley, Tesla can also promote a broader perspective of regional planning within California State Parks, and with other state, regional and local agencies.

F. LEGISLATURE SUPPORTED PRESERVATION OF TESLA AND ESTABLISHED RESERVE CLASSIFICATION TO PERMANENTLY PRESERVE LANDS OF STATEWIDE SIGNIFICANCE SUCH AS TESLA

Multiple bills were advanced in the State Legislature between 2018 and 2021 to permanently preserve Tesla’s 3,100 acres for conservation purposes, including AB 1086 in 2019 which was passed by the Legislature, but vetoed by the Administration. The State Legislature again took action to preserve Tesla in 2021, including in budget trailer bill SB 155 that preserved the approximate 3,100 acres of Tesla and provided \$1,000,000.00 for planning for Tesla’s future use. While the Department did not support any of the legislative efforts to preserve Tesla’s natural and cultural resources, preservation was achieved through the support of the Legislature. Reserve classification is the best way to ensure that the legislative goals to permanently preserve Tesla are achieved.

The California Legislature established the Reserve classification option for units of the State Park system recognizing that some areas in our state needed to have a higher level of durable protection with the top priority given to preservation. The Reserve classification is not limited to only protecting areas with a single resource, such as redwoods, but also covers all of California’s integrated landscapes that represent the breadth and depth of the state’s natural and cultural heritage.

Classification, whether a separate initial step or combined with the General Plan, directs the types and intensity of allowed uses. Classification is, therefore, a critical decision relative to protecting — or harming — Tesla’s natural environment and Tribal Cultural Landscape. It is the foundation upon which this Tesla Reserve Concept Plan is developed.

There are examples of other units in the State Park system that had to be reclassified to a higher level of protection after damage occurred, such as Armstrong Redwoods State Natural Reserve (previously State Park). It is vital that error not occur at Tesla.

Other classification options do not provide the level of protection required for Tesla’s exceptional resources. A “Park” classification or “Preserve” sub-classification provide for higher-intensity uses, and are for discrete areas. As described in the *Reserve Classification of Tesla based on Assessment of Biological Resources and Effects of Recreational Activities*, and identified by Indigenous Tribes, higher-intensity uses cause irreparable damage, and will not protect Tesla’s large integrated ecosystem and Tribal Cultural Landscape.

The classification option that best protects Tesla’s irreplaceable 3,100-acre natural and cultural landscape from the outset is required, and that is Reserve classification.

G. DO NO HARM

The precautionary principle of conservation underpins the reasons for protecting Tesla from predictable, as well as unpredictable, negative consequences of high-intensity recreational uses and development. The classification that leads to the least harm to fragile and irreplaceable natural and cultural resources of statewide significance must be selected. The precautionary principle dictates that when the effects of an action are irreversible, even if they develop over time, decision-makers should adopt precautionary measures to avoid harm.

Given the available statutory options, Reserve classification, and an associated General Plan based on that Reserve classification, ensures the least harm is done while also providing **access for all** to a unique and extraordinary natural and cultural resource experience.

Tesla is “*Hismet Warep Horsetka*”, “**Sacred Earth in Harmony.**” Classification of Tesla as a Reserve ensures that it remains so.

PART III – CONCEPTUAL DESIGN FOR “HISMET WAREP” ~ “SACRED EARTH” RESERVE

Full permanent protection of Tesla’s entire 3,100 acres is necessary given its exceptional natural and cultural resources as extensively documented in the *Reserve Classification of Tesla based on Assessment of Biological Resources and Effects of Recreational Activities*, and identified by Tribal leaders. Tesla, classified as a Reserve pursuant to PRC 5019.65 is the best classification option to provide permanent durable protection and preservation of its irreplaceable natural resources **and** Tribal Cultural Landscape, while also providing low-intensity public **access for all** for enjoyment and education.

Under a Reserve classification, access for low-intensity recreation activities on a day-use basis can be provided ensuring the minimum impact and modification to the natural landscape and sensitive resources. As a new unit of the state parks system and a Reserve, management can incorporate maximum measures to minimize greenhouse gas and pollution impacts.

Camping and campgrounds, drones, geocaching, dogs, biking, and automobile-driving will not be allowed within the Reserve, but can be accommodated within other adjacent state parks land and other state, regional and local parks in the region that provide high-intensity recreation services.

The over 300 acres of “Other State Parks Property” along Tesla Road that has never been planned for public use, and the existing 1,550 acre Carnegie SVRA, both of which are adjacent to the Tesla Reserve, are considered in the planning for Tesla.

The Tesla Reserve Concept Plan is organized around four (4) key planning areas, including the 3,100 acre Tesla Reserve classified as a single unit, Other State Parks Property, the existing Carnegie SVRA, and Tesla Historic District which overlays parts of the Reserve, Other State Parks Property and Carnegie SVRA.

- A. 3,100 acre Tesla Reserve
- B. 300-plus acre Other State Parks Property
- C. Carnegie SVRA
- D. Tesla Historic District Overlay

Although the Tesla Reserve Concept Plan considers the other planning areas, classification/General Plan/opening the Tesla Reserve should not be delayed for the additional time required to develop other planning areas (e.g., time to do additional resource reviews of Other State Parks Property).

Attached is a table and map depicting the Tesla Reserve Concept Plan and a map from (Figure 2 from the Assessment) depicting some of the natural resources that cover the entire 3,100 Tesla site necessitating protection of the entire 3,100 acres.

A. TESLA RESERVE AREA

1. Establish the 3,100 acre Tesla Natural Reserve pursuant to PRC Section 5019.65 (a)

Classify Tesla as Natural Reserve to provide the highest level of protection available for Tesla’s biodiversity, rare plants and animals, role as a critical linkage habitat corridor and climate change refugia. Natural Reserve classification durably protects the entire Tribal Cultural Landscape, in addition to discrete cultural features. Natural Reserve classification provides the stewardship ethic and responsibility for all visitors (and State Parks management) across the entire natural and cultural landscape of the Reserve, without subdividing areas, and putting public targets on particularly sensitive natural or cultural sites. Further, the land classified in the Reserve as a unit of the State Park system is stable and resistant to modifications and demands overtime for more intensive use.

- a. Organize the public experience across the entire 3,100 acre site around low-intensity public access for enjoyment, education and stewardship of the entire natural landscape, and the entire Tribal Cultural Landscape.
- b. Through co-management agreements with Indigenous Tribes, provide for access for ceremonial and traditional practices, and joint decision-making as detailed in section A.3. below.

2. Give the Reserve a California Native American Name

Give the Reserve the California Native American Chochenyo language name identified by local Indigenous leaders and use the meaning of the name as guide for permanent respectful preservation:

v !
“Hismet Warep Reserve” (meaning “Sacred Earth”)

or

v ! v
“Hismet Warep Horsetka Reserve” (meaning “Sacred Earth in Harmony”)

3. Co-Manage the Reserve with Indigenous Tribes

Establish co-management agreements with local Indigenous Tribes for specific access by Indigenous Tribes, and to ensure their meaningful collaborative role in determining use, trail locations, public access, signage, interpretive materials, management practices and future development across the Tribal Cultural Landscape, including:

- a. Access for Indigenous Tribes – Pursuant to co-management agreements with Indigenous tribes, facilitate access for Indigenous tribes to the entire 3,100 acre Tribal Cultural Landscape, including access to sacred sites, archeological features and entire natural landscapes for traditional practices, ceremonial purposes, education, and medicinal plant and material collection,
- b. Access to Indigenous Sites for General Public – Based on access provisions in co-management agreements with Indigenous Tribes, provide only guided/permitted access for the general public to specific culturally sensitive Indigenous resources as identified by Tribes.

- c. Native American Cultural Center– Build a new or refurbish an existing State Parks building in the Other State Parks Property as a Native American Cultural Center, a gathering place the Tribal members, and location for interpretation and educational materials, exhibits and programs as detailed in section B.1.b. below: Other State Parks Property.
- d. Native American Resources and Cultural Heritage Interpretation and Education - In collaboration with Tribes and pursuant to co-management agreements, support and collaborate with Tribes on development of interpretation and educational materials, exhibits, and programs for Tribes and the general public.
- e. Native American Resource and Cultural Heritage Research - In collaboration with Tribes and pursuant to co-management agreements, support ethnographic study, and ethnobiological and other cultural resource research of Indigenous People in Tesla and the area, their use of the resources on the land, and their relationship to the land to add to the cultural heritage and academic record.
- f. Tribal Cultural Landscape Survey/Protection – Complete cultural resource survey of entire 3,100-acre Tribal Cultural Landscape, not just select archeological and ceremonial features, and recognize and protect the entire Tribal Cultural Landscape.

4. Provide Low-Intensity Recreation for Public Access within the Reserve

Provide public access for low-intensity recreation on a day-use basis for enjoyment of and education about the natural and cultural landscape within the 3,100 acre Reserve as provided under PRC 5019.65 (a), with signage and materials to enhance the visitor experience and to protect resources. Low-intensity recreation access will include:

- a. Hiking Trails - General day-use hiking trails for low-intensity recreation providing public access for enjoyment of natural and cultural resources, and education:
 - i. Establish Hiking Trails within the Reserve for enjoyment and education, such as for bird-watching, nature appreciation, cultural resource interpretation, and to scenic points. Trails should be designed to facilitate routes of interest, and avoid particularly sensitive natural and cultural resources, including avoiding encroachment on Indigenous sites and specific natural resources.
 - Hiking trails will use a limited subset of existing graded/ungraded ranch roads to establish routes that traverse varied locations within the Reserve while minimizing new routes, and impacts to particularly sensitive natural and cultural resources.
 - ii. Realign, decommission and restrict ranch road hiking trails, including managing allowed periods of use, and establish limited trail connections to avoid protected areas, including:
 - Eliminate all trail/ranch road access that runs by or encroaches on Indigenous sacred sites, as determined by co-management agreements with Indigenous Tribes.

- Ensure trail/ranch road access does not encroach on protected zones of other Indigenous sites, such as BRMs, as determined by co-management agreements with Indigenous Tribes.
 - Ensure trail/ranch road access does not encroach on sensitive natural resource areas that should have no public access or restricted access for certain periods of time given resource life history and habitat requirements.
 - Realign upper part of ranch road into wildlands to provide an alternative public access route to ridgetop that does not enter deeded no-public-access restricted buffer area.
- b. Interpretive Trails/Tours – Provide guided/self-guided interpretive trails and tours with maps/brochures and signage, for visitors of all ages, around natural and cultural resources in Reserve, for example:
- i. Indigenous Tribes that used Tesla
 - ii. Tribal Cultural Landscape of Tesla
 - iii. How Indigenous People used Tesla’s Plants and Wildlife
 - iv. Geology of Tesla
 - v. Historic Tesla Town and Mine Site
 - vi. Tesla Historic District
 - vii. History of Corral Hollow Canyon
 - viii. Birds of Tesla
 - ix. Wildlife of Tesla
 - x. Plants, Habitats and Ecosystem of Tesla
 - xi. Tesla’s Biodiversity and Rare Plants and Animals
 - xii. Tesla’s role as a Critical Linkage Habitat Corridor in the Diablo Range and Climate Refugia given changing temperature and rainfall patterns

Access to particularly sensitive natural or cultural resources areas, and public access to Indigenous sites as determined in co-management agreements with Tribes, will be by guided tour/permit only.

- c. Accessible Trails - Establish accessible trails for visitors with mobility and other disabilities as practicable given the steep and rough terrain in the Reserve wildlands. Develop associated interpretive materials, including braille and audio guides.

- i. If needed, provide special access support, such as to the entrance to the Historic Tesla Town and Mine site, by State Parks electric shuttle service.
- d. Equestrian Trail – A limited equestrian trail using existing ranch roads is possible, subject to further resource review, with measures to prevent introduction of invasive species, and establishment of a safe location for trailer parking/loading/unloading in Other State Parks Property as detailed in section B.1.c.iv. below: Other State Parks Property.
- e. Education and Stewardship - K-12 education programs around natural and cultural resources, and environmental and cultural resource ethics and stewardship.
- f. Research - University level study and research of natural and cultural resources, including biodiversity, climate change impacts and adaptation, ethnographic study, ethnobiological and other research of Indigenous Peoples, and historic exploration of the Tesla area cultural landscape.

Camping and campgrounds, automobile-driving, biking, drones, geocaching, and dogs would not be allowed within the Reserve, but could be accommodated within adjacent Other State Parks Property, subject to resource reviews and protecting the integrity of the Tesla Historic District.

5. Locate Reserve Entrance at Diablo Range District Office Entrance

- a. Locate Main Reserve Entrance at the Diablo Range District Office entrance given its bridge which provides reliable safe access across Corral Hollow Creek, accessible terrain for basic facilities on south side of Corral Hollow Creek, and access to hiking trails into the Tesla wildlands. The entrance location will include basic facilities such as parking, restroom, and visitor kiosk. It will also serve as the entrance for the Other State Parks Property as detailed in section B below: Other State Parks Property.
- b. Place a State Historic Marker for the Reserve, and Tesla Historic District, encompassing its pre-historic and historic cultural heritage. Relocate the de Anza expedition marker to appropriate location within Reserve.
- c. Build new or repurpose existing State Parks building(s) for a Native American Cultural Center and Visitor Center/Museum within Other State Parks Property as detailed in section B.1.b. below: Other State Parks Property.

6. Manage Reserve for Maximum Resource Protection

- a. Focus management on protecting biodiversity, habitats, cultural resources, and preventing/eliminating invasive species with minimal impacts and resource manipulation, such as regular monitoring and removal of invasive plants, and limited grazing management plan approved by ACRC, USFWS and CDFW for target endangered species.
- b. Maximize green/low carbon emission management measures, including maximizing use of electric vehicles by State Parks staff.

- c. Secure 3,100-acre Reserve with boundary fence with wildlife crossings/gates. Remove hazardous debris, including, but not limited to burned and collapsed buildings near Mitchell Ravine entrance, and old abandoned fences and debris around the perimeter and within the Reserve. Most of the Reserve boundary has some level of fencing, with the Mitchell Ravine entrance one area that is unfenced and requires immediate protection.
- d. Subject to property boundaries, safety, security, and ability to manage and enforce, consider future trade/purchase for secondary trailhead, and to add inholdings to Other State Parks Property.

B. OTHER STATE PARKS PROPERTY

1. Use Already-Impacted Other State Parks Property on Tesla Road for Higher-Intensity Uses

a. Classify Other State Park Property

Subject to resource evaluations, classify/sub-classify 300-plus acres of other State Parks Property along Tesla Road (referred to here as “Other State Park Property”) which is already impacted with structures and development (including houses, outbuildings, septic systems, wells, pumps, electrical systems, electrical and telephone lines, and paved roads) to allow higher-intensity uses. This Other State Parks Property includes over 300 acres of land, with over 200 acres located on the north side of Tesla Road, and is primarily undeveloped.

Classifying the 300-plus acres of Other State Park Property as a separate State Park unit pursuant to PRC 5019.53 named “Tesla Park” is appropriate given the opportunity for higher-intensity uses and the location of the Tesla Historic District. Several other units of the State Parks system have more than one classified unit adjacent or close to each other, such as:

- Armstrong Redwoods State Natural Reserve and Austin Creek State Recreation Area
- Henry Coe State Park and Orestimba Wilderness Area
- Big Basin Redwoods State Park and West Waddell Creek State Wilderness Area
- Ano Nuevo State Park, Big Basin State Park and Butano State Park
- Anza Borrego Desert State Park, Ocotillo Wells SVRA, Cuyamaca Rancho State Park and Cuyamaca Mountain State Wilderness
- Humboldt Redwoods State Park and Bull Creek State Wilderness (separate Northern and Southern Sections)
- Prairie Creek State Park and Murrelet State Wilderness

The following elements will guide the development and use of the 300-acre Other State Park Property, subject to resource assessments, and co-management agreements with Indigenous Tribes.

b. Locate Native American Cultural Center and Visitor Center/Museum in Other State Parks Property

Build a new or repurpose an existing State Park building(s) on Other State Park Property along Tesla Road for the Native America Cultural Center and Visitor Center/Museum. There is water,

power, telephone, septic, and paved road access for existing buildings on Other State Parks Property.

c. Provide Higher-Intensity Uses in Other State Parks Property Outside Reserve

Subject to resource assessments, utilize already impacted Other State Parks Property along Tesla Road outside the 3,100 acre Reserve for higher-intensity uses to prevent disturbance and damage to the Reserve, reduce development costs, and provide for visitor safety, to include:

- i. Walking Paths/Hiking Trails – Locate walking paths and hiking trails in Other State Parks Property, including along Tesla Road/Corral Hollow Road between Tesla Reserve Entrance and Carnegie SVRA. State Parks already has paved and unpaved roads within the Other State Park Property along Tesla Road that can be utilized.
- ii. Accessible Trails – Locate trails for visitors with mobility and other disabilities in Other State Parks Property, given generally more accessible terrain, and paved roads. Develop associated interpretive materials, including braille and audio guides.
- iii. Biking Trails– Locate dedicated biking trails, including electric and mountain bikes, within Other State Parks Property to prevent disturbance and damage within the 3,100-acre Reserve.
- iv. Equestrian Use – Add area for horse trailer parking/loading/services and dedicated equestrian trail within Other State Parks Property. Locating equestrian facilities and dedicated trail in the Other State Parks Property may support a limited equestrian trail within the Reserve, subject to resource review, and invasive species control.
- v. Campground – If needed given existing campground at Carnegie SVRA, add another campground, with accessible campsites, in the Other State Parks Property along Tesla Road to prevent disturbance and damage within the 3,100 acre Reserve, reduce cost and provide for visitor safety.

d. Restore Corral Hollow Creek

Restore Corral Hollow Creek through Other State Parks Property and Carnegie SVRA along Tesla Road/Corral Hollow Road given its essential importance to the ecology of the region and resources of statewide significance.

C. CARNEGIE SVRA

1. Use Already Impacted Carnegie SVRA for High-Intensity Uses

- a. Biking – Direct biking to Carnegie SVRA (in addition to Other State Parks Property) to prevent disturbance and damage within the 3,100-acre Reserve. Various bikes (including motorcycles, e-motorcycles, e-mountain bikes, e-bikes) already use Carnegie SVRA. State Parks can facilitate and prioritize bike use in Carnegie SVRA to reduce greenhouse gas and air pollution impacts and concentrate impacts to already damaged areas.

- b. Campground – Use existing Carnegie SVRA campground. If needed, add another campground in the Other State Parks Property along Tesla Road to prevent disturbance and damage with the 3,100 acre Reserve.

D. TESLA HISTORIC DISTRICT OVERLAY

1. Establish the Tesla Historic District and seek designation under the National Registry of Historic Places (NRHP) as recommended by the Office of Historic Preservation in 2012.

The Tesla Historic District⁸ will overlay the Historic Tesla Town and Mine site located in the Reserve, and extend east over part of the Other State Parks Property and Carnegie SVRA along Corral Hollow Creek and near Tesla Road/Corral Hollow Road that encompass other historic hamlets and sites. State Parks will:

- a. Designate the Tesla Historic District and obtain listing on the National Registry of Historic Places.
- b. Develop visitor education materials, signage and experiences, including interpretive guided/self-guided tours, and exhibits within the Visitor Center/Museum, for the Tesla Historic District to mark historically relevant places, events and context for the general public and K-12 students, and to facilitate university level research.
- c. Coordinate planning within the Tesla Historic District with allowed uses based upon the underlying classification. For example, only low-intensity uses will be allowed in the Historic District within the Reserve, and higher-intensity uses will be allowed within the Other State Parks Property, to the extent that the integrity of the Tesla Historic District is maintained.

E. REGIONAL PLANNING

The Tesla Reserve Concept Plan serves a range of conservation and recreation objectives considering all state park land in the Corral Hollow Canyon, including the Reserve, Other State Parks Property and Carnegie SVRA. It also signals the need for regional planning to serve a broader range of conservation and outdoor recreation opportunities.

1. Facilitate long-term regional planning

With other local, regional and state agencies, provide a range of outdoor recreation opportunities for the public through the Corral Hollow Canyon and connecting the East Bay/Tri-Valley and Northern San Joaquin/Central Valley, such as:

- a. Join with Livermore Area Recreation and Park District (LARPD) and East Bay Regional Park District (EBRPD) to establish hiking trail links with other trails in the Livermore area.

⁸ Referred to as the *Tesla Mining and Industry Historic District* in 2012 OHP recommendation letter.

- b. Work with Alameda and San Joaquin Counties and CalTrans for development of a paved shoulder for safer road bike access along Tesla Road/Corral Hollow Roads with future road re-paving projects.
- c. Work with San Joaquin County, Contra Costa Water District for development of hiking trail along part of Corral Hollow Road.

F. MAPS AND TABLE

1. Tesla (Hismet Warep) Reserve Concept Map

Based on Tesla’s extraordinary array of natural resources documented in the *Reserve Classification of Tesla based on Assessment of Biological Resources and Effects of Recreational Activities*, and the Tribal Cultural Resource requirements identified by Indigenous Tribes, attached is a table and map of the **Tesla (Hismet Warep) Reserve Concept Plan** and documenting the following key elements:

- a. Boundaries of 3,100 acre Tesla (Hismet Warep) Reserve. Only low-intensity recreation uses will be allowed in the Reserve, and include hiking trails, guided and self-guided tours, education programs and research and potential limited equestrian trail subject to resource protection measures and facilities located in Other State Parks Property. Hiking trails will use a limited subset of the existing graded/ungraded ranch roads to have a minimal footprint, reduce impacts to natural resources and avoid particularly sensitive natural resources and cultural resources, including as determined under co-management agreements with Indigenous Tribes.
- b. Location of 300-plus acres of adjacent Other State Parks Property which is already impacted by development. Subject to resource reviews, higher-intensity recreation activities can be located in the Other State Parks Property, such as hiking, biking, camping, equestrian use and Native American Cultural Center and Visitor Center/Museum.
- c. Location of Main Reserve Entrance given reliable safe bridge access across Corral Hollow Creek, accessible terrain for basic facilities on south side of creek, access to hiking trails into the Tesla wildlands, and proximity to location Other State Parks Property and Native American Center and Visitor Center/Museum within Other State Parks Property.
- d. Approximate location of Native American Cultural Center, and Visitor Center/Museum within Other State Parks Property. Existing State Parks buildings in Other State Parks Property can be repurposed for public use or new buildings constructed as a Native American Cultural Center, and Visitor Center/Museum.
- e. Approximate location of Tesla Historic District overlay, which will have allowed uses based on underlying classification, to the extent integrity of the Historic District is maintained.
- f. Location of adjacent Carnegie SVRA where high-intensity use currently occurs. High-intensity activities will continue in Carnegie SVRA, including campground, and biking of various types.
- g. Location of inholdings and parcels for possible future purchase or trade.

Tesla (Hismet Wares) Reserve Concept Plan

Alameda County, CA

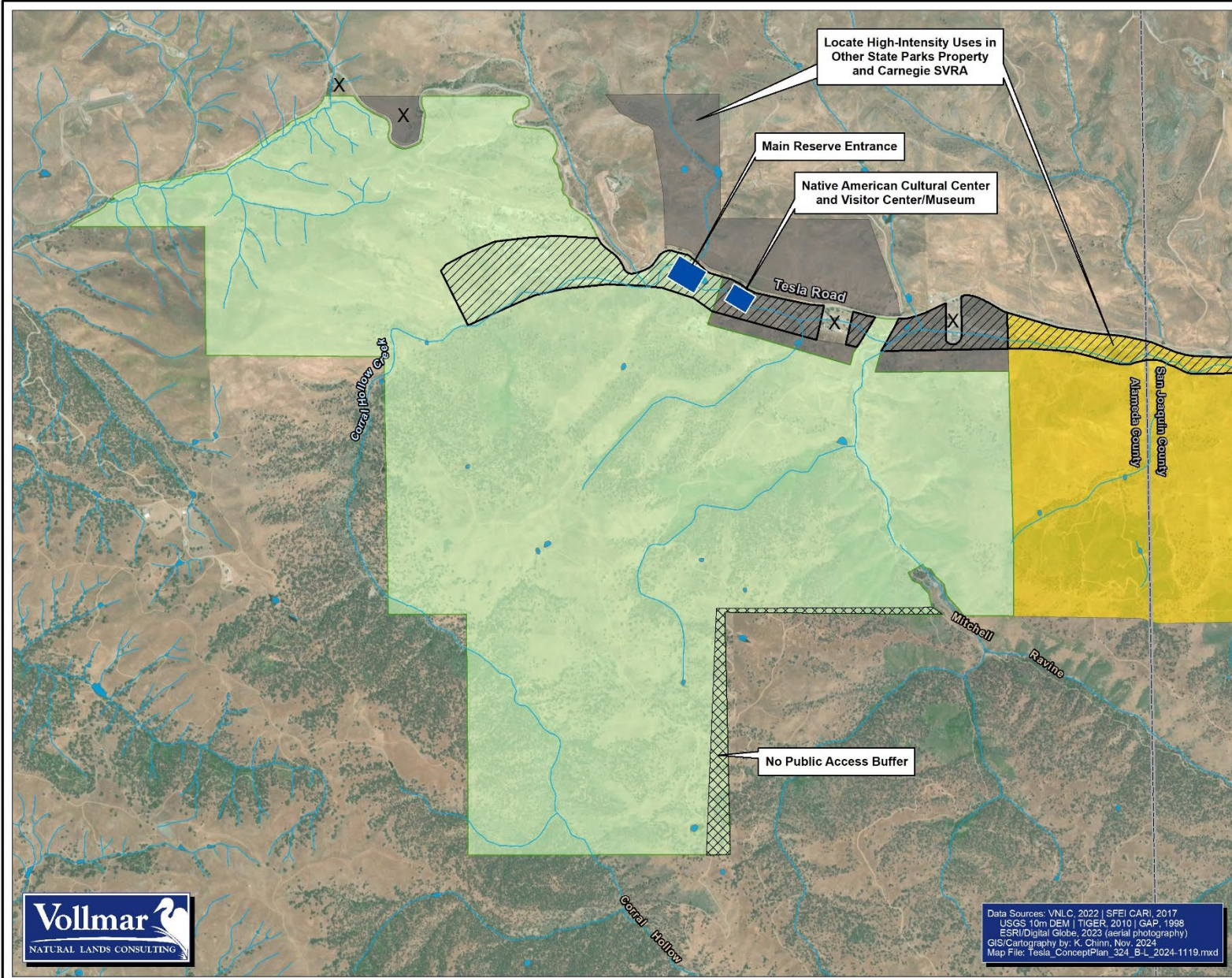
Legend

-  County Boundary
-  Stream
-  Wetland
-  Tesla (Hismet Wares) Reserve
-  Other State Parks Property (High-intensity Uses)
-  Carnegie SVRA (High-intensity Uses)
-  Tesla Historic District Overlay
-  Potential Purchase/Trade



1:24,000

1 inch = 2,000 feet at tabloid layout

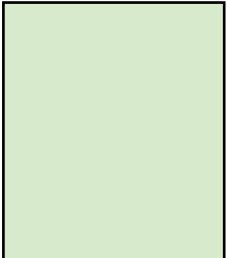



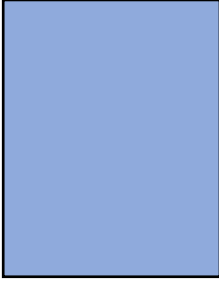

Data Sources: VNLC, 2022 | SFEI CARI, 2017
 USGS 10m DEM | TIGER, 2010 | GAP, 1998
 ESRI/Digital Globe, 2023 (aerial photography)
 GIS Cartography by: K. Chinn, Nov. 2024
 Map File: Tesla_ConceptPlan_324_B.L_2024.1119.mxd

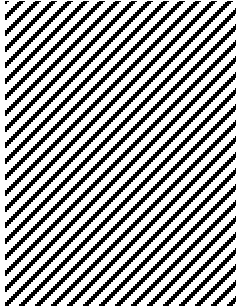
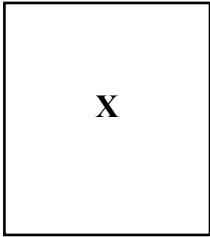
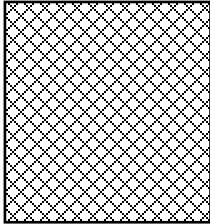
2. Table of Key Elements of Tesla Reserve Concept Map and Planning Area

The Tesla Reserve Concept Plan establishes Tesla’s approximate 3,100 acres as a State Park Natural Reserve pursuant to PRC 5019.65 (a), named the “*Hismet Warep Reserve*”. The Tesla Reserve is part of a larger State Parks planning area in the Corral Hollow Canyon that includes the 300-plus acres of Other State Parks Property and approximately 1,550 acres of Carnegie SVRA. The Tesla Historic District will overlay a part of the Reserve, Other State Parks Property and SVRA, to provide a range of conservation and recreation services. Consideration of the entire planning area within the Corral Hollow Canyon is required to protect irreplaceable natural and cultural resources, and provide for recreation services that are appropriate to the resources in the area.

The following table briefly documents the key elements of the Tesla Reserve Concept Plan which are described in more detail above and in the associated maps.

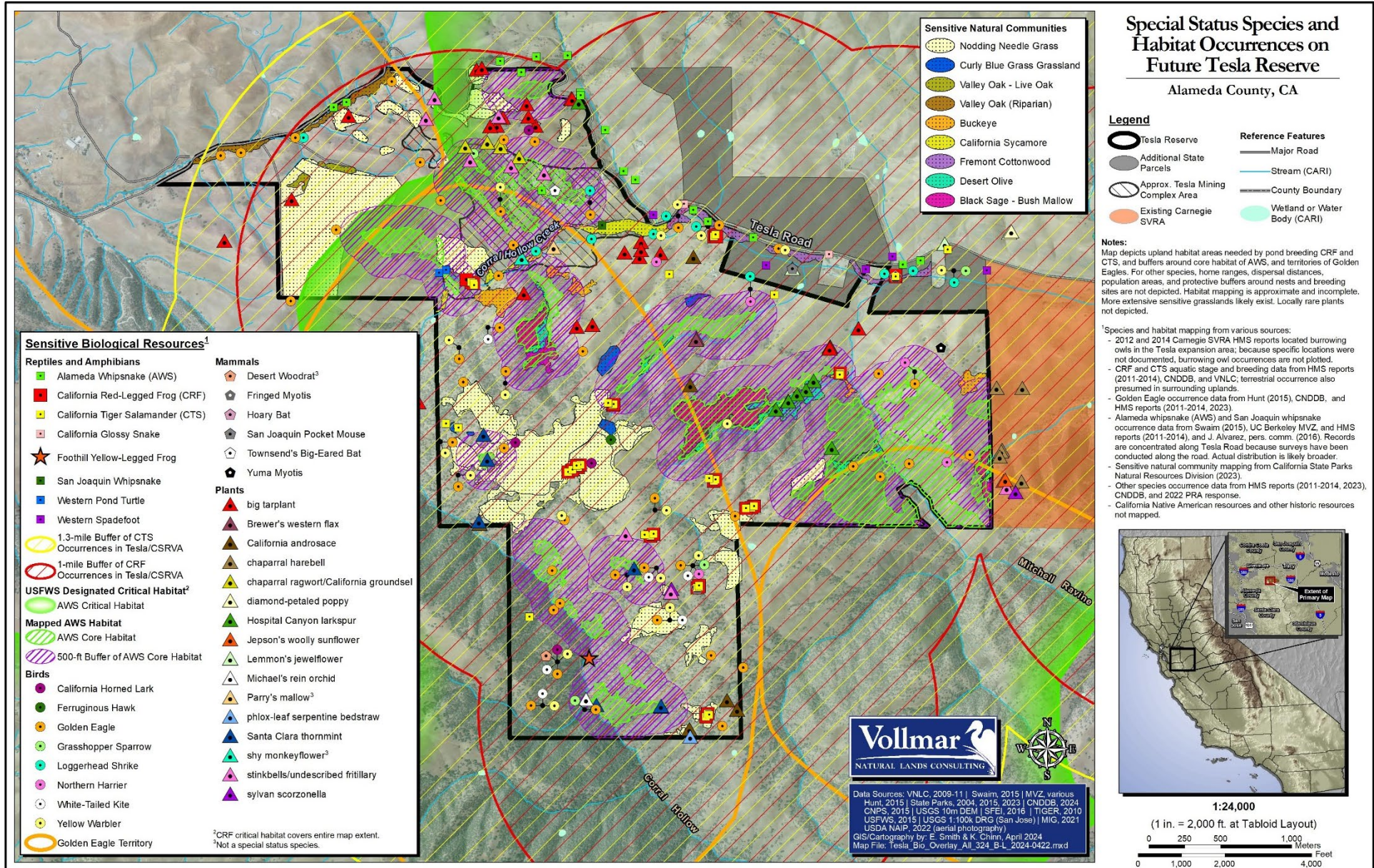
Color on Maps	Title	Description
	<p style="text-align: center;">Tesla-Hismet Warep Reserve</p>	<p>Overview: Approximate 3,100 acre remote Tesla wildlands south of Tesla Road to be classified as a Reserve under PRC 5019.65 (a) given its extraordinary and irreplaceable natural resources and Tribal Cultural Landscape. Reserve to be named <i>Hismet Warep Reserve</i>.</p> <p>Low-Intensity Uses Only: Use existing graded/ungraded ranch roads to establish trails for hiking, birdwatching, nature and cultural resource appreciation, scenic points, guided/self-guided interpretive tours and materials and signage; K-12 education; research; and equestrian trail, subject to resource reviews and required facilities. Access further restricted in particularly sensitive natural, and pursuant to co-management agreements with Indigenous Tribes, in cultural resource areas.</p>
	<p style="text-align: center;">Other State Parks Property – Tesla Park</p>	<p>Overview: Approximately 300 acres of Other State Park Property located adjacent to Tesla Reserve on the north and south side of Tesla Road. Area includes open space and facilities with power, wells, septic, telephone, paved roads, trails, and Tesla Road access.</p>

		<p>Low and High-Intensity Uses: Subject to resources review and maintaining the integrity of the Tesla Historic District, uses can include some higher-intensity uses, such as walking paths with interpretive materials and signage, biking, camping, and equestrian use, subject to invasive species control; Native American Cultural Center and Visitor Center/Museum that would serve the Reserve, Other State Parks Property, and Tesla Historic District.</p> <p>Resource review required for Other State Park Property area.</p>
	<p>Entrance and Native American Cultural Center and Visitor Center/Museum</p>	<p>Overview: Areas within Reserve and Other State Parks Property where Entrance, and Native American Cultural Center and Visitor Center/Museum located.</p> <p>Uses: Entrance for the Reserve located at Diablo Range District office entrance given the reliable safe bridge access across Corral Hollow Creek. Minimal facilities for Reserve parking, restrooms, and information kiosk to be located in the accessible terrain on south side of creek near the entrance bridge. Native American Cultural Center and Visitor Center/Museum located on Other State Parks Property in refurbished existing buildings. Areas serve the Reserve, Other State Parks Property, and Tesla Historic District.</p>
	<p>Carnegie SVRA</p>	<p>Overview: Approximately 1,550 acre existing SVRA adjacent to the Tesla Reserve and Other State Park Property on the south side of Tesla Road/Corral Hollow Road.</p> <p>High-Intensity Uses: Existing high-intensity uses, with OHVs, bikes, including electric bikes and motorcycles, and campground.</p>

	<p align="center">Tesla Historic District</p>	<p>Overview: Overlay area which recognizes the Tesla Historic District recommended by the State Parks OHP as running from the Historic Tesla Town and Mine site in the Reserve, east along Corral Hollow Creek and Tesla Road/Corral Hollow Road through part of the Other State Parks Property and into Carnegie SVRA.</p> <p>Uses: Allowed uses based upon the underlying classification, to extent that integrity of the Tesla Historic District is maintained. Visitor materials, signage and experiences highlight the historic elements of the District.</p> <p>OHP identified District as eligible for listing on the National Registry of Historic Places.</p>
	<p align="center">Potential Purchase/Trade</p>	<p>Overview: Property for possible future purchase or trade and In-holdings to provide possible other trail head into the Reserve, and continuous access along Tesla Road.</p> <p>Uses: Allowed uses based upon the underlying classification, i.e., Other State Parks Property and Reserve.</p>
	<p align="center">Deeded No Public Access Buffer</p>	<p>Overview: Area where no public access is allowed by real property deed and where current trails/ranch roads will be re-routed outside buffer.</p> <p>Uses: No public access of any kind allowed. Only administrative access allowed.</p>

3. Special Status Species and Habitat Occurrences on Future Tesla Reserve Map

Figure 2 from *Reserve Classification of Tesla based on Assessment of Biological Resources and Effects of Recreational Activities*, provides a visual overview of some of the abundant special status plants and animals and habitats that cover the entire 3,100 acre Tesla site, and which necessitate classification of Tesla as a Reserve.



Vollmar
NATURAL LANDS CONSULTING

Data Sources: VNLC, 2009-11 | Swaim, 2015 | MVZ, various
Hunt, 2015 | State Parks, 2004, 2015, 2023 | CNDDDB, 2024
CNPS, 2015 | USGS 10m DEM | SFEI, 2016 | TIGER, 2010
USFWS, 2015 | USGS 1:100K DRG (San Jose) | MIG, 2021
USDA NAIP, 2022 (aerial photography)
GIS/Cartography by: E. Smith & K. Chinn, April 2024
Map File: Tesla_Bio_Overlay_All_324_B-L_2024-0422.mxd

Scale: 1:24,000
(1 in. = 2,000 ft. at Tabletop Layout)

0 250 500 1,000 Feet
0 1,000 2,000 4,000 Meters